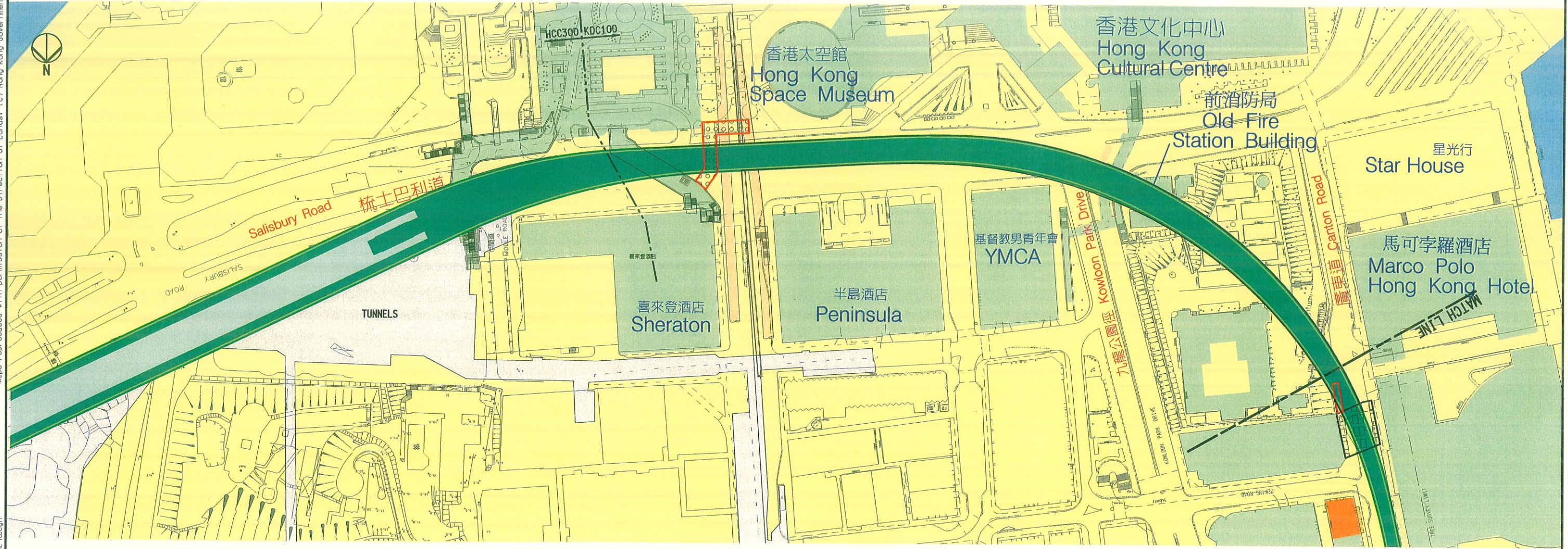


Maps reproduced with permission of The Director of Lands. (C) Hong Kong Government.

FILENAME: G:\env\project\23573\drawings\3rd EIA-V8\Option\EX-Figure2-1a.dgn



REV	DATE	BY	SUB	APP	DESCRIPTION
△					
△	DEC2003	SW	FC	ST	EIA REPORT
△	NOV2003	SW	FC	ST	EIA REPORT
△	JUNE2003	SW	FC	ST	EIA REPORT
△	7MAR2003	SW	FC	ST	EIA REPORT (2ND DRAFT)
△	11OCT2002	SW	FC	ST	EIA REPORT (1ST DRAFT)

DESIGNED BY	SW
DRAWN BY	JF
CHECKED BY	FC
IN CHARGE	ST
DATE	5 DEC 2003



**New Railway Projects
新鐵路策劃**

奧雅納工程顧問
Ove Arup & Partners Hong Kong Limited

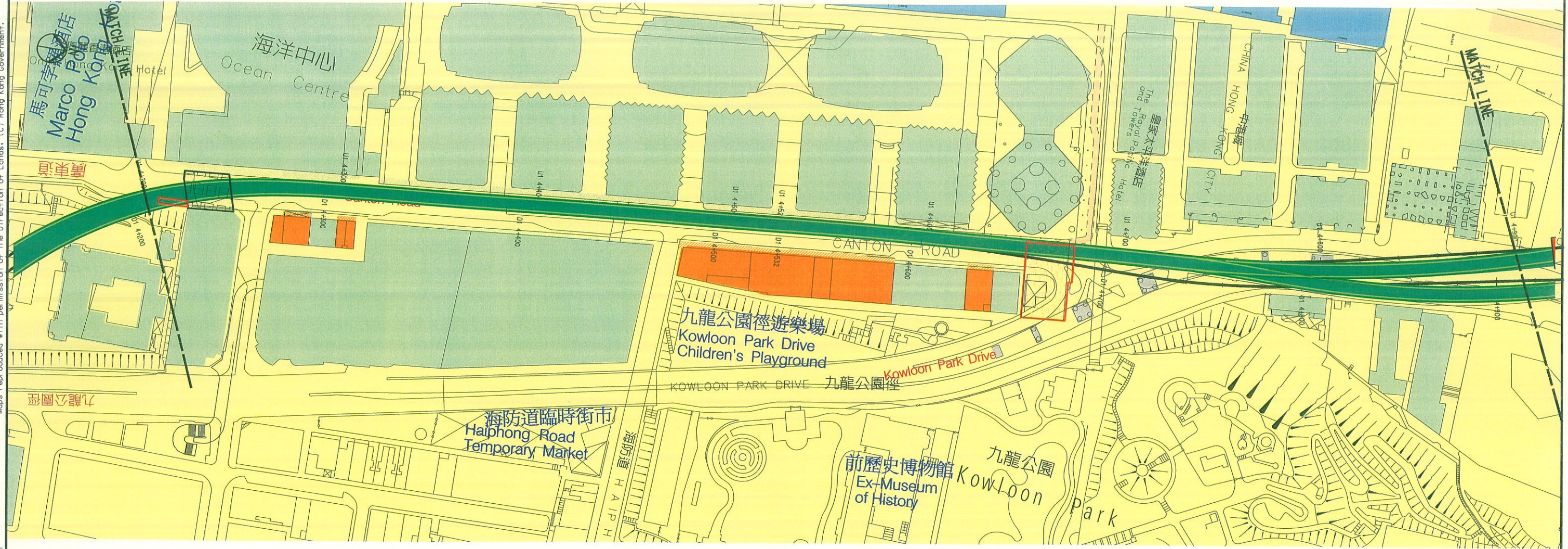


GSA-5100 九龍南環線環境影響評估
KOWLOON SOUTHERN LINK KSL GSA-5100
EIA & ASSOCIATED SERVICES
南環線廣東道方案的定線 (第1頁)
KSL ROUTE CORRIDOR
CANTON ROAD SCHEME

CADD FILENAME	CADD DATE
SCALE	5 DEC 2003
DRAWING NUMBER	1:2000 @ A3
FIGURE 圖 2-1-1	
SHEET NO	STAGE CODE REV
1 OF 3	P E

Maps reproduced with permission of The Director of Lands. (C) Hong Kong Government.

FILENAME: G:\env\project\23573\drawings\3rd EIA-V8\Option\EX-Figure2-1b.dgn



REV	DATE	BY	SUB	APP	DESCRIPTION
△					
△	DEC2003	SW	FC	ST	EIA REPORT
△	NOV2003	SW	FC	ST	EIA REPORT
△	JUNE2003	SW	FC	ST	EIA REPORT
△	7MAR2003	SW	FC	ST	EIA REPORT (2ND DRAFT)
△	11OCT2002	SW	FC	ST	EIA REPORT (1ST DRAFT)

DESIGNED BY	SW
DRAWN BY	JF
CHECKED BY	FC
IN CHARGE	ST
DATE	5 DEC 2003



New Railway Projects
新鐵路策劃

奧雅納工程顧問
Ove Arup & Partners Hong Kong Limited

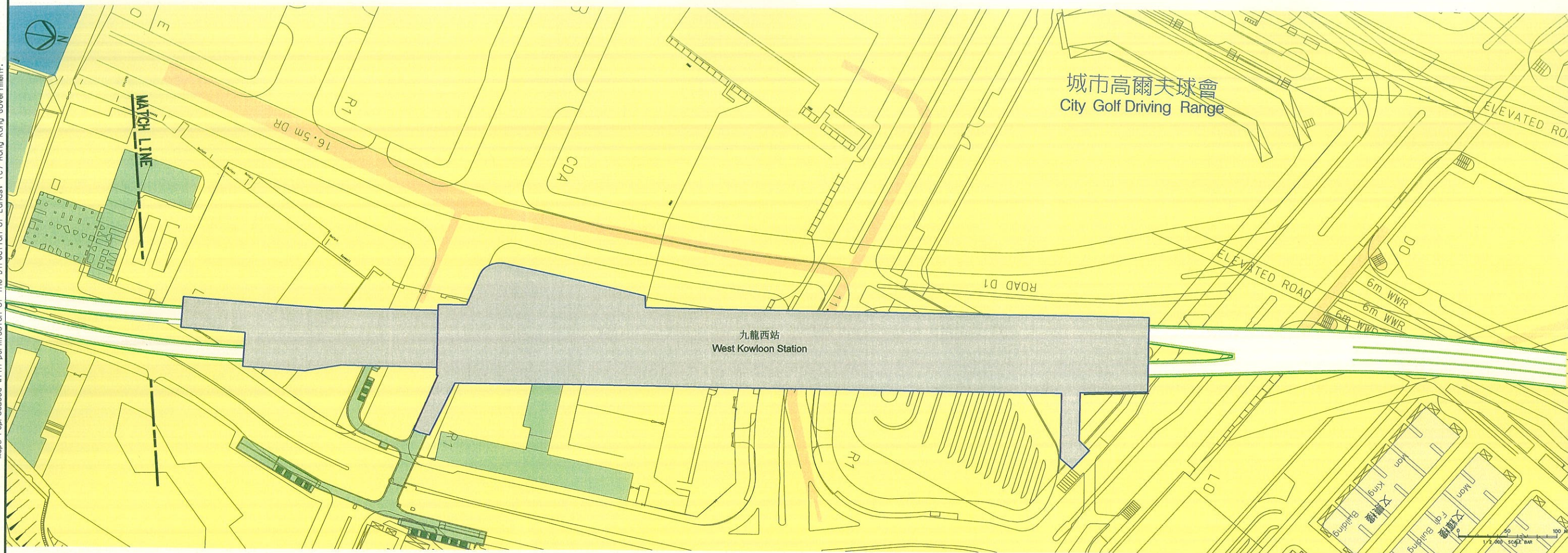


GSA-5100 九龍南環線環境影響評估
KOWLOON SOUTHERN LINK KSL GSA-5100
EIA & ASSOCIATED SERVICES
南環線廣東道方案的定線 (第2頁)
KSL ROUTE CORRIDOR
CANTON ROAD SCHEME

CADD FILENAME	CADD DATE
SCALE	1:2000 @ A3
DRAWING NUMBER	FIGURE 圖 2-1-2
SHEET NO	2 OF 3
STAGE CODE	P
REV	E

Maps reproduced with permission of The Director of Lands. (C) Hong Kong Government.

FILENAME: G:\env\project\23573\drawings\3rd EIA-V8\Option\EX-Figure2-1c.dgn



REV	DATE	BY	SUB	APP	DESCRIPTION
△					
△					
△					
△					
△					
△					
△					
△					
△					
△					

REV	DATE	BY	SUB	APP	DESCRIPTION
△					
△	DEC2003	SW	FC	ST	EIA REPORT
△	NOV2003	SW	FC	ST	EIA REPORT
△	JUNE2003	SW	FC	ST	EIA REPORT
△	7MAR2003	SW	FC	ST	EIA REPORT (2ND DRAFT)
△	11OCT2002	SW	FC	ST	EIA REPORT (1ST DRAFT)

DESIGNED BY	SW
DRAWN BY	JF
CHECKED BY	FC
IN CHARGE	ST
DATE	5 DEC 2003



New Railway Projects
新鐵路策劃

奧雅納工程顧問
Ove Arup & Partners Hong Kong Limited



GSA-5100 九龍南環線環境影響評估
KOWLOON SOUTHERN LINK KSL GSA-5100
EIA & ASSOCIATED SERVICES
南環線廣東道方案的定線 (第3頁)
KSL ROUTE CORRIDOR
CANTON ROAD SCHEME

CADD FILENAME	CADD DATE
	5 DEC 2003
SCALE	1:2000 @ A3
DRAWING NUMBER	FIGURE 圖 2-1-3
SHEET NO	STAGE CODE REV
3 OF 3	P E